

# JOURNAL OF NAVAL ENGINEERING

---

**Vol.44**

**JUNE 2008**

**No.2**

**CONTENTS**

**PAGE**

1.	Advanced DC Power Distribution Architecture - A Vision of the Submarine Future?.....	225
2.	Concept Studies for a Joint Support Ship .....	241
3.	EMKIT - Commissioning and Performance Testing of a Technical Demonstrator for the Electromagnetic Catapult Launch of UAVs...	269
4.	PTFE Faced Bearings .....	285
5.	Dreadnaught Class Nuclear IFEP Aircraft Carrier .....	294
6.	The Design, Development & Testing of Textile Ventilation Transfer Ducting for Warships and RFAs .....	309
7.	UK Navy Surface Warships Engines Exhaust Emissions Study 1988 - 2006.....	317
8.	Visual Landing Aid Evaluation Using Simulated Dynamic Interface Methods in the Manned Flight Simulator (MFS).....	345
9.	First Ever Classification of a Naval Submarine.....	370
10.	Book Reviews .....	376
11.	Notices .....	390
12.	Other Abstracts .....	392
13.	Naval Engineering Yesteryears .....	416

**This Journal is the property of Her Majesty's Government. The contents are not to be communicated directly or indirectly to the press. Attention is drawn to the provisions of the Official Secrets Acts.**

**It is issued by the Chief Naval Engineer Officer. It need not be accounted for as a book of reference. Nothing contained in it is to be understood to supersede the Queen's Regulations (Royal Navy), or any other Ministry of Defence publication.**

**The Ministry of Defence does not necessarily endorse the views and opinions expressed in this Journal.**

---

**Correspondence should be addressed to:  
Professor Chris Hodge FREng  
The Editor-in-Chief,  
Journal of Naval Engineering,  
BMT Defence Services Ltd,  
Maritime House,  
210 Lower Bristol Road  
Bath, BA2 3DQ**

**Telephone +44 (0)1225 473679  
Fax +44 (0)1225 448714  
e-mail: [CHodge@bmtdsl.co.uk](mailto:CHodge@bmtdsl.co.uk)**

#### **SECURITY**

**This Journal may carry a security classification of 'UK Restricted', and recipients are reminded that when it does the Rules governing the custody of such material must be observed.**

#### **CONDITIONS OF RELEASE**

**This information is released by Her Majesty's Government in the United Kingdom to the recipient Government for defence purposes only, and must be accorded the same degree of security protection as that accorded thereto by Her Majesty's Government.**

**This information may be disclosed only within the defence departments of the recipient Government; it may not be released to any other Government or to the press.**

## CONTENTS

	PAGE
1. Advanced DC Power Distribution Architecture - A Vision of the Submarine Future LIEUTENANT COMMANDER P S PARVIN .....	225
2. Concept Studies for a Joint Support Ship David ANDREWS Richard PAWLING .....	241
3. EMKIT - Commissioning and Performance Testing of a Technical Demonstrator for the Electromagnetic Catapult Launch of UAV's Graham BELLAMY LIEUTENANT Mick THOMSON .....	269
4. PTFE Faced Bearings LIEUTENANT COMMANDER W. BENNETT .....	285
5. Dreadnaught Class Nuclear IFEP Aircraft Carrier LIEUTENANT R H GOODENOUGH.....	294
6. The Design, Development & Testing of Textile Ventilation Transfer Ducting for Warships and RFA's Brian G HUNT Philip J A LOBB.....	309
7. UK Navy Surface Warships Engines Exhaust Emissions Study 1988 – 2006 LIEUTENANT COMMANDER Jacques P OLIVIER.....	317
8. Visual Landing Aid Evaluation Using Simulated Dynamic Interface Methods in the Manned Flight Simulator (MFS) Dr. Bernard FERRIER Dean CARICO LIEUTENANT COMMANDER Stephen CROCKATT COMMANDER Jeffrey R VON HOR .....	345
9. First Ever Classification of a Naval Submarine Dr. Lars GRÜNITZ Lorenz PETERSEN .....	370
10. Book Reviews .....	376
The Battle of Jutland .....	376
Armed Merchant Cruisers 1878-1945 .....	377
Hitler, Dönitz and the Baltic Sea .....	378
Castle Class Corvettes .....	379
On and Off the Flight Deck .....	380
The De Havilland SEA VIXEN .....	381
The WINDFALL Yachts - A Legacy of Goodwill .....	382
SEA VIXEN De Havilland's Ultimate Fighter Aircraft.....	383
Moving Bases. Royal Navy Maintenance Carriers and MONABs	384
Tigris Gunboats. The Forgotten War in Iraq 1914-1917 .....	386
The History of Dive Bombing .....	387
11. Notices .....	390

12.	Other Abstracts .....	392
13.	Naval Engineering Yesteryears.....	416
	Superheated Steam (1920).....	417
	Letters of Machinery Interest (1947).....	421
	Emergency Repairs to Evaporating Plant (1947).....	433

# WEB ARCHIVE AND INTERNET ACCESS TO THE JOURNAL OF NAVAL ENGINEERING

## EDITOR'S INTRODUCTION

The Journal of Naval Engineering has a long history, indeed its origins can be traced back to 1920 when Papers on Engineering Subjects were introduced. These continued in regular publication until 1946 when they were replaced by the Journal of Naval Engineering. In his foreword to the first issue of Papers on Engineering Subjects Engineer Rear Admiral G. G. Goodwin CB said:

*“The object of this publication is to bring to the notice of Engineer Officers from time to time engineering information, not otherwise generally available to them, which is likely to prove of value and assistance in carrying out their official duties.*

*“With the object of keeping Engineer Officers in touch with the developments of their profession, it is intended amongst other information to issue descriptions of and experience obtained with the latest developments of propelling and auxiliary machinery with their appliances and particulars of materials, fuels, manufacturing methods, etc., together with the results of important trials and of Engineering Research work carried out under Admiralty direction or elsewhere.*

*“But an equally valuable feature will be the promulgation of the particular experiences available from current practice afloat. The success of this aspect of the Papers is necessarily dependant in the main upon the co-operation of those Officers serving afloat. Engineer Officers are accordingly invited to forward for consideration contributions dealing with experience in the daily running, maintenance and repair of machinery under their supervision, which is likely to prove of general value and interest and which would not customarily be reported to the Admiralty.”*

This is as relevant today as it was then; indeed it could be considered, given the rapid increase in the pace of change over the intervening years that the need for the Journal has never been greater. But what is certain is that the Journal should be readily available as a research resource for current engineers and as a historical record of the long continuous thread of naval engineering that it encompasses. To this end a web based archive of the Papers on Engineering Subjects and the Journal of Naval Engineering has been created. The web archive is both historically and technically fascinating and can be used as a tool for research through an integrated search facility. The archive's details are in the succeeding pages; I commend it to you in the hope that you will appreciate its huge value.

I must however finish with a heart felt plea: please respond to Admiral Goodwin's original request by supporting the Journal with articles. Just as 88 years ago, these

ought to reflect all of naval engineering, from sea, from harbour, from maintenance, from colleges and from industry. Without this support the Journal cannot continue; and if it were to cease we should all be the poorer.

Enjoy the archive and support your Journal.

Chris Hodge

### Editorial Team Manager Note:

Enjoyment of and support to the Journal of Naval Engineering (JNE) can now also be achieved by visiting the newly established web site at <http://www.jneweb.com>.

BMT Defence Service's editorial team were tasked by the Assistant Director Naval Authority to capture all the data from Papers on Engineering Subjects and past issues of the JNE, establishing a comprehensive electronic database containing over 26,000 pages of research material available to the wider community with Marine Engineering interests.

We hope you enjoy the web site, any suggestions and comments you may have would be most appreciated. These should be sent in the first instance to the Admin team by email to [dans@bmtdsl-w.co.uk](mailto:dans@bmtdsl-w.co.uk)

The following instructions are offered to enable access to the site and make the most of all it has to offer:

### JNEWeb Help Guide

When first accessing the Journal of Naval Engineering Website, the Home Page (Fig 1) will be displayed. To enter the site, click on the "Enter Site" link, which appears in the top left corner of the page. There are two other clear links on the Home Page, "Contact Us", which when clicked takes users to the "Contact Information" section of the web site and "Legal Information", which will display the "Legal Info" area of the web site.

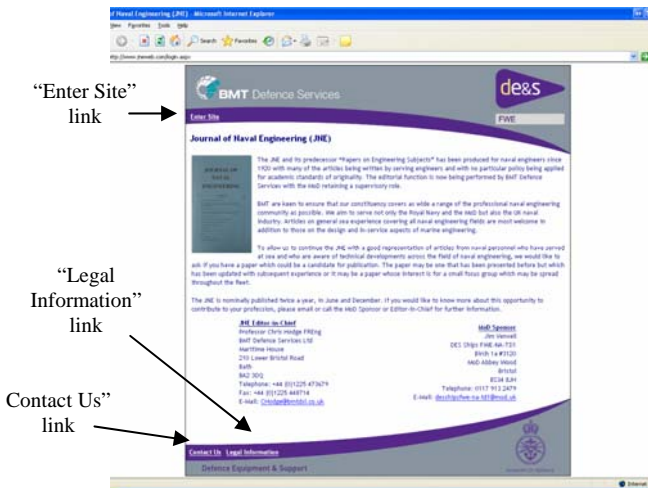


Fig. 1 - "Home Page"

## Browse

When entering the web site, the “Browse” section (Fig 2) appears and the “root” level is displayed. This area allows users to view JNE papers and Papers on Engineering Subjects (POES) via a visual, hierarchical structure. JNE Papers appear within Books, which in turn appear within Volumes. POES Papers are separated into the decades they were published. When navigating the “catalogue” structure, it is possible to return to any previous point by using the “Breadcrumb Trail” that appears at the top of the catalogue (Fig 3).

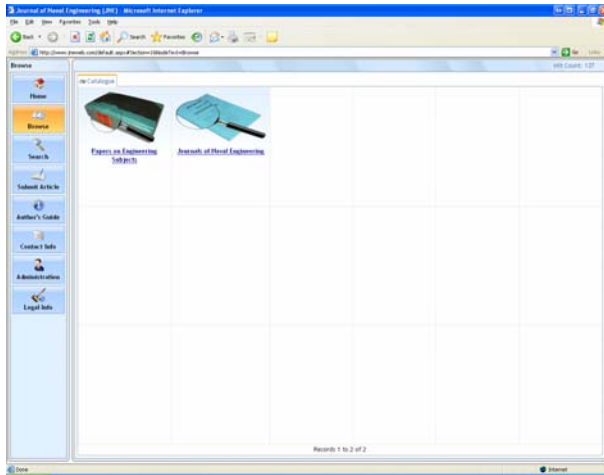


Fig. 2 - "Browse Section"

Note: The "breadcrumb trail" is not present at the root level because the "catalogue" structure has not been explored.

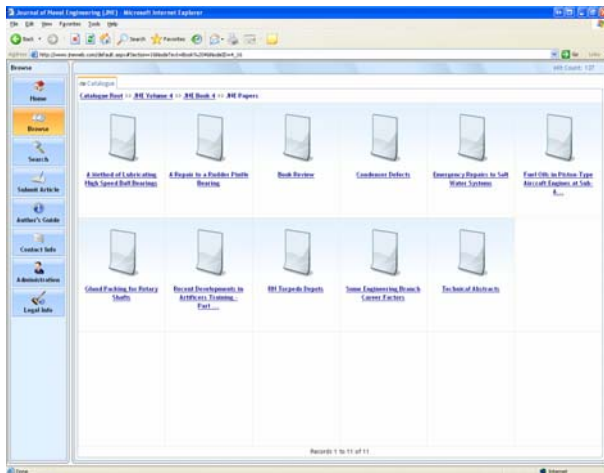


Fig. 3 - "Breadcrumb Trail"

JNE Papers are displayed and the "Breadcrumb Trail" is also displayed to indicate the navigation that has occurred.

The following icons are used to depict the various levels of the browsing structure:



- JNE Volumes



- JNE Books



- JNE & POES Papers



- POES Decades

When a Paper is clicked on in the structure, a new window is opened containing the file in its PDF format. Clicking on any of the other icons will take you to the next level of the hierarchical structure.

## Search

A search facility is provided within the web site, allowing the contents of JNE & POES papers to be searched. The following options can be specified when performing a search:

- 1) **Search** – The types of papers you wish to search. It is possible to search All Papers, just JNE Papers or just POES Papers. By default, the search is performed on All Papers.
- 2) **Text** – The text that is being searched for in the JNE or POES Papers.
- 3) **Criteria** – Determines whether the text that is entered is searched as an “Exact Phrase” or as “Any of the Words”.
- 4) **From & To** – Specifies the years between which documents are returned. For example, if you select “1920” in the **From** and “1925” in the **To** year, papers between those 2 years will be returned. The **To** year must be greater than the **From** year, otherwise the search will not be run.

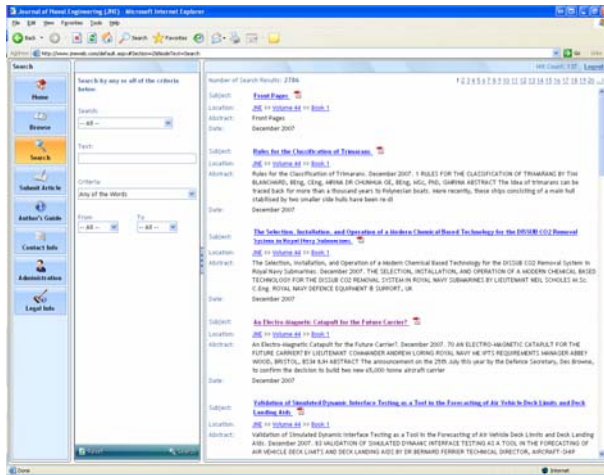
When the search is run, the following data is returned for each search result:

- 1) **Subject** – The title of the paper.
- 2) **Location** – The location of the paper in the catalogue structure. This information appears as a link, which when clicked will navigate the user to the appropriate location in the “Browse” section.



- 3) **Abstract** – A summary of the document.
- 4) **Date** – The date the paper was published.

(Fig 4) shows a search that has been run and the results that are returned.



**Fig. 4 - "Search" Example**

### Submit Article

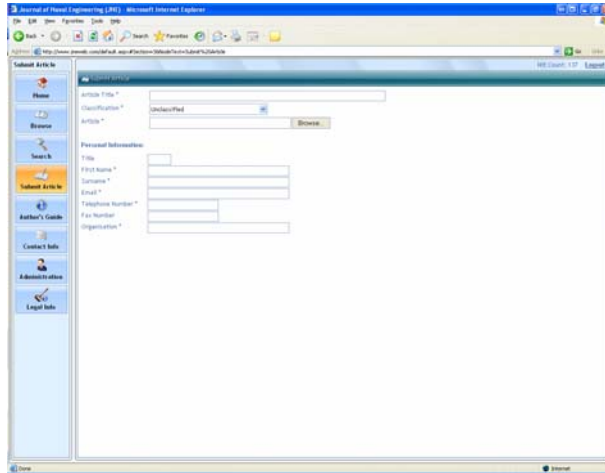
Any visitor to the JNE web site can potentially submit a new article to the editorial team. When the “Submit Article” button is clicked, a form is loaded containing the following fields for information about the document:

- 1) **Article Title** – The title of the document they are submitting.
- 2) **Classification** – The classification (unclassified or restricted). Restricted articles cannot be submitted via this medium so if this option is selected, all other form fields are hidden and further guidance is offered to contact the Admin staff.
- 3) **Article** – Represents the file that is being submitted.

As well as information about the file, personal information needs to be entered:

- 1) **Title**
- 2) **First Name**
- 3) **Surname**
- 4) **Email**
- 5) **Telephone Number**
- 6) **Fax Number**
- 7) **Organisation**

When entering this information, it is important to note that fields marked with an asterisk (\*) are mandatory. (Fig 5) shows the “Submit Article” page:



**Fig. 5 - "Submit Article" Page**

### **Author's Guide**

This section of the web site simply informs users on how to format a paper for publication.

### **Contact Info**

This section displays contact information for the JNE Editor-in-Chief, MoD Sponsor, JNE Editorial Team and the BMT IS Helpdesk.

### **Administration**

This section of the web site is only accessible to administrators who are set-up with an account. It is not possible to view this area without logging in.

### **Legal Info**

The "Legal Info" section shows the MoD disclaimer along with BMT guidelines and disclaimers detailing how the web site should and can be used.