

THE OPENING OF THE ADMIRALTY TEST HOUSE, NATIONAL GAS TURBINE ESTABLISHMENT

7th November, 1952

SPEECH BY

ADMIRAL SIR MICHAEL M. DENNY, K.C.B., C.B.E., D.S.O.

THIRD SEA LORD AND CONTROLLER

“ I am delighted to be invited down here to-day to open the new Admiralty Test House, which is part and parcel of the National Gas Turbine Establishment.

This is a most opportune moment for me to tell you, and I am giving away no State secrets in doing so, that only yesterday important and far reaching decisions were made by the Admiralty concerning the future of gas turbines in the Royal Navy. As a result of these decisions, I feel quite sure that the Merchant Navy and the rest of the world, will be quick to follow the lead of the Royal Navy.

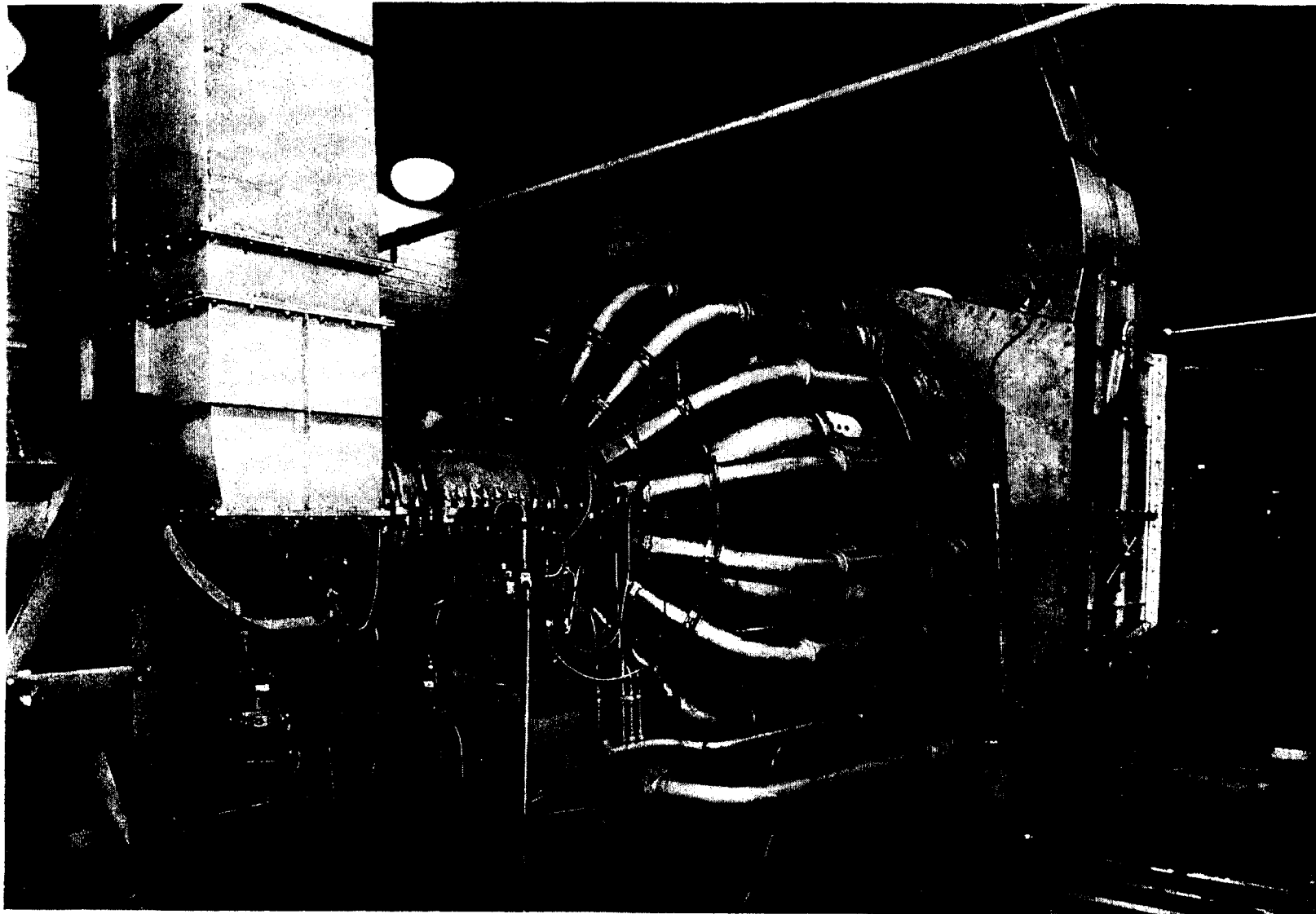
The consequences of these decisions through the Marine world will be far reaching and the impact may well prove as revolutionary as the partial supersession of the steam reciprocating engine at the turn of the century by the steam turbine.

In the near future gas turbines will be found in all classes of vessels in some form or another. I am not, and please don't get me wrong here, suggesting that Capital Ships will have complete gas turbine propulsion during my time in the Royal Navy, but I am suggesting that a number of applications of gas turbines will be in use afloat in the Royal Navy during my lifetime.

Ships will certainly have power generating sets in the very near future, smaller ships will undoubtedly have gas turbine propulsion and gas turbines may well be fitted in Aircraft Carriers, Cruisers, Destroyers, and Frigates as boost sets for use when the full power for which the ship is designed is required, other forms of power for propulsion providing for the range of speed below the top range of power. This application would enable steam turbine designers to produce more efficient and economical steam turbines, which is of paramount importance as well.

As you will appreciate, the work carried out in this Test House as part of the development of gas turbines for marine use will be of the very greatest importance to the Royal Navy and indeed, in the long term, to the whole National effort.

I congratulate all concerned at the N.G.T.E. on the completion and bringing into use of the Marine Test House in such good time and in such good shape.”



GENERAL VIEW OF ENGINE SHOWING COMPRESSOR DISCHARGE DIFFUSERS AND COMBUSTION CHAMBERS