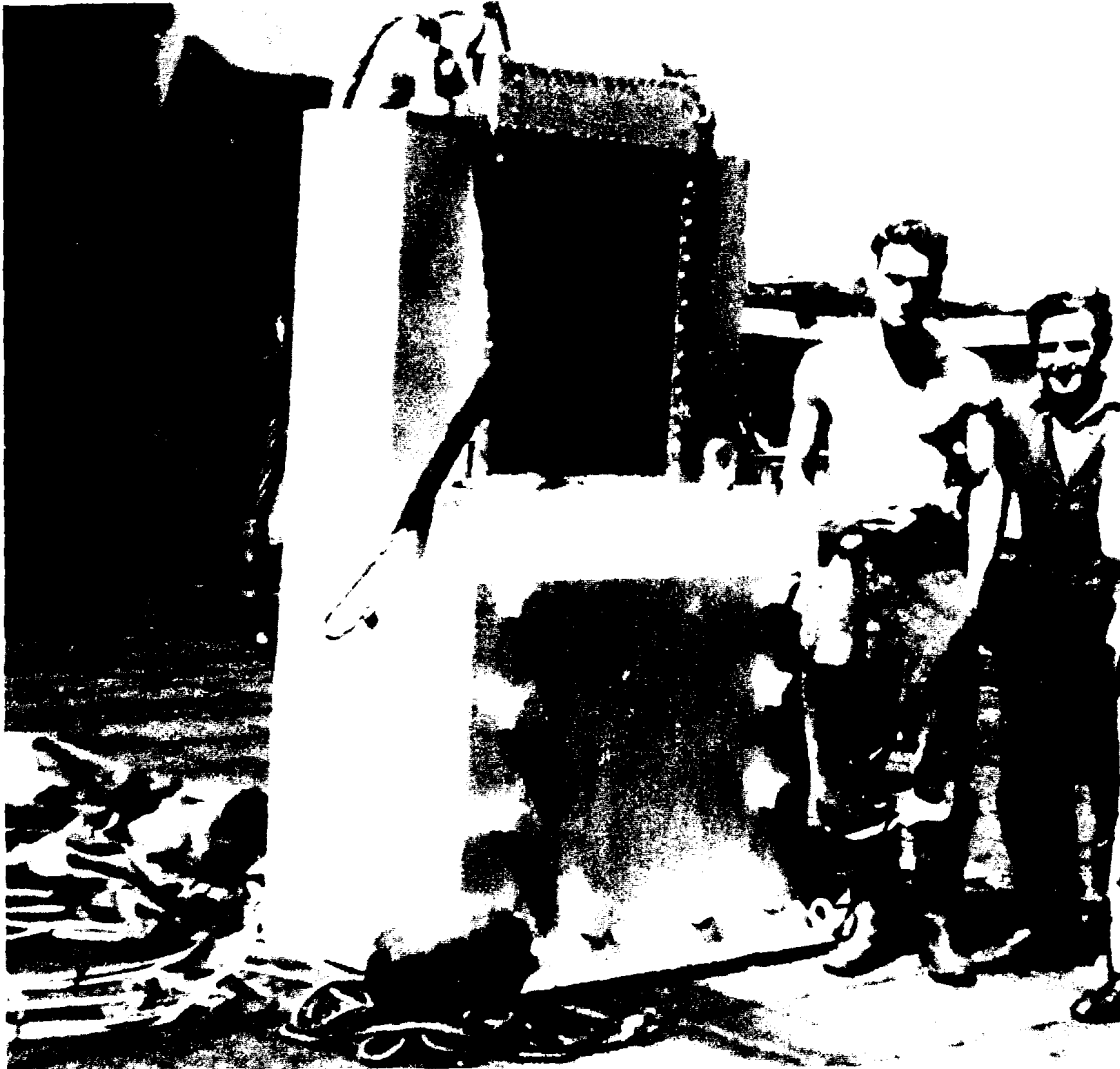


# NOTICES

## WHAT IS IT?



A query has been received, by the MoD Press Office, from a member of the public. A relation of this person, whilst serving in the Royal Navy, was connected with a trial around 1950. The query is what is the piece of equipment shown in the photograph taken at the time of the trial. The known facts are:

Trial       KT2 (or K2).  
 Place       On *Barndale* (Victory tender).  
 Time        Between 5 May and 9 July 1949.

From the photograph, the equipment is about 7 feet high and judging by the hawsers attached to it, very heavy. It is thought it may have something to do with nuclear and Harwell has been mentioned. From the wire and buoy attached, it would appear that what ever it was, it was going to be lowered into the sea somewhere.

Any suggestions, please forward to the editor. There is no prize and this is a genuine query. The editor's suggestion that it is an early prototype of a NAAFI coffee machine, is not the kind of answer wanted!!