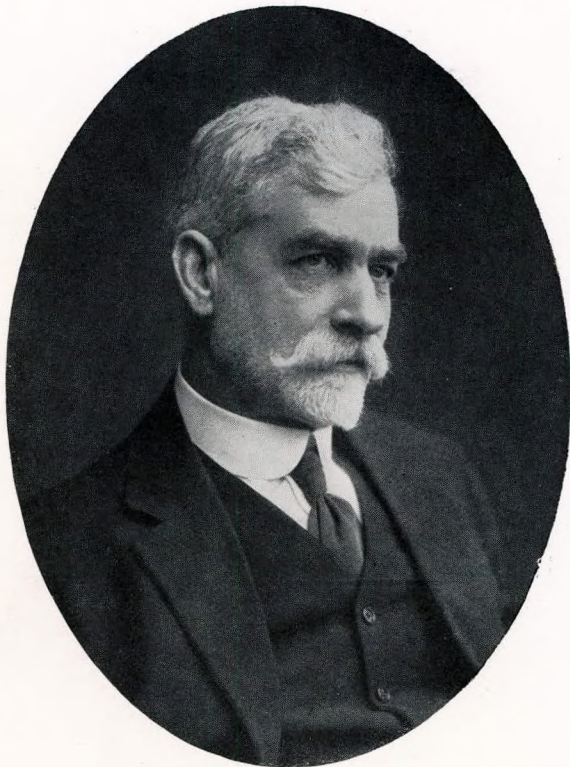


Reprinted from
The Marine Engineer & Naval Architect.
January, 1915.



MATTHEW TURNBULL, ESQ., R.N.R.

Vice-President, Inst. of Marine Engineers.

CHIEF ENGINEER OF THE "ROHILLA,"
WRECKED OCTOBER 30th, 1914, IN A GALE,
OFF THE YORKSHIRE COAST, NEAR WHITBY.

The Illustration shown on the following page is a reduced reproduction of the First-Class Engineer's Certificate, issued on the 26th August, 1881, by the Board of Trade to Mr. Turnbull, who was saved from the Wreck. The Certificate contained in a cash box, belonging to Mr. Turnbull, was washed ashore and is reproduced in the state as recovered.

The "ROHILLA" was built in 1906 by Messrs. Harland & Wolff, and has been almost exclusively engaged as a Troop Ship. She was 460 feet in length and of 7,409 gross tons.

